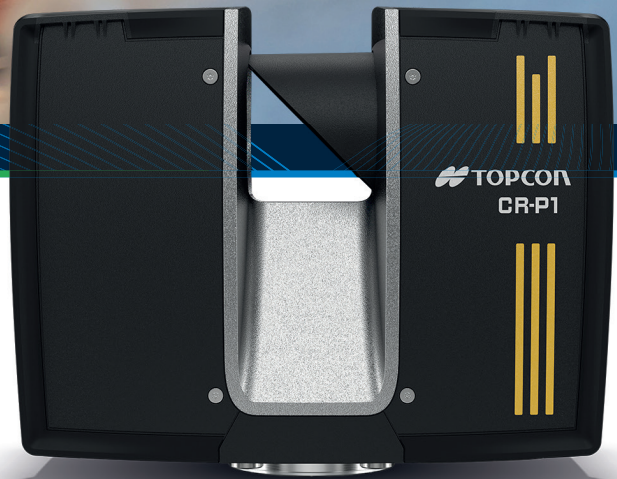
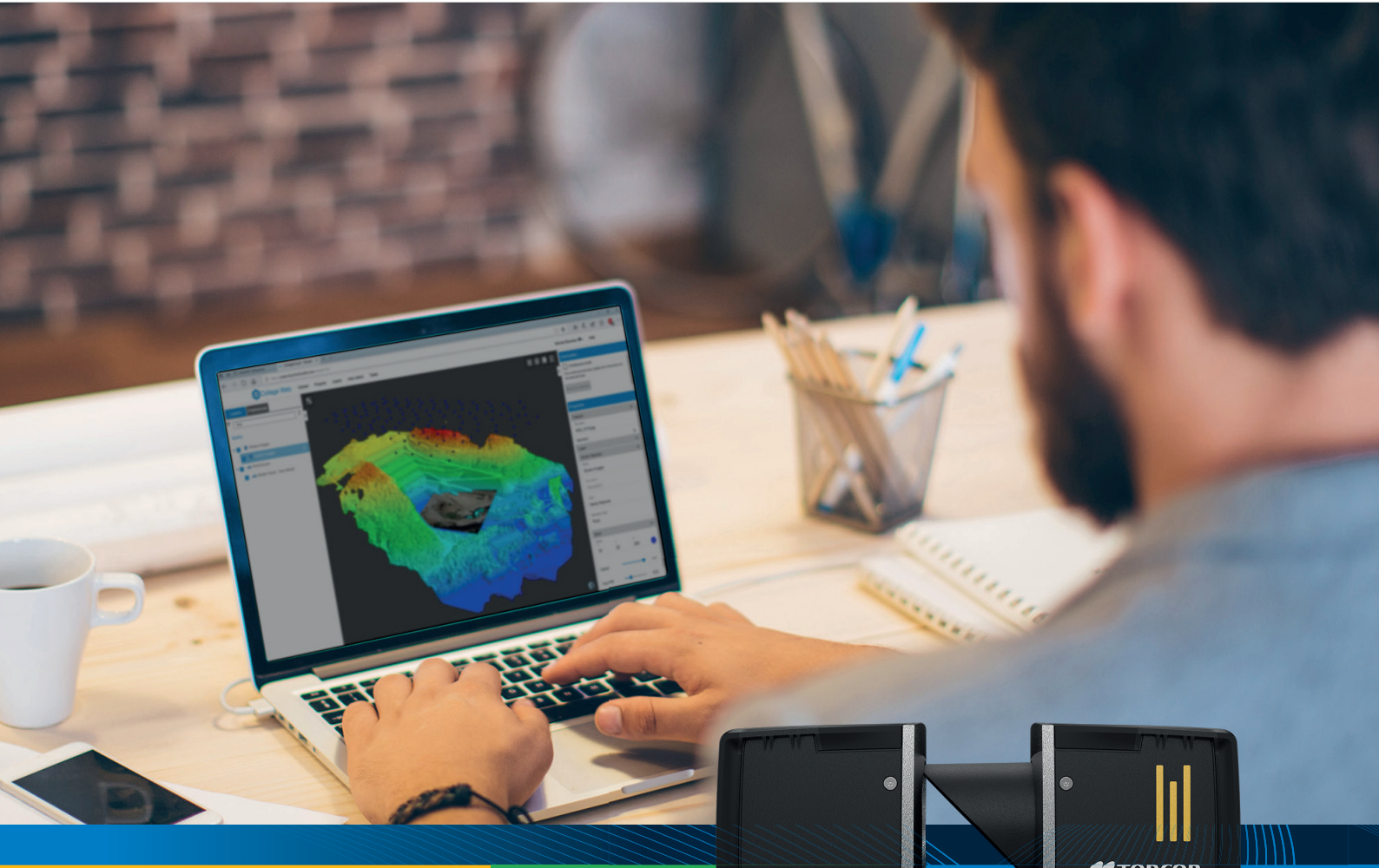


Topcon CR-P1

Laser Scanning Solution



Capture reality and
reproduce it digitally

Learn more at topconpositioning.com





Are you ready to revolutionize how you collect point clouds?

The CR-P1 Laser Scanner is a vital tool for construction, architecture, and engineering professionals, providing accurate 3D data to optimize workflows. Available in two models — CR-P1 100 (100 m range) and CR-P1 200 (200 m range) — it excels at capturing high-resolution data for building design, documenting large renovation sites, and ensuring precision in construction progress and as-built plans, even in challenging environments.

Designed for modern professionals, this all-in-one solution combines advanced laser scanning with user-friendly functionality for exceptional accuracy and efficiency. Its lightweight, durable design performs well in tough environments, while high-speed operation saves valuable time on-site. By capturing high-resolution 3D data, the CR-P1 streamlines workflows and provides clear, actionable results. For precision and productivity, this tool is built to transform your projects

- » 2 million points per second scanning speed
- » 3D accuracy: 2 mm
Distance accuracy: 1mm
- » 2-year manufacturer warranty
- » Real-time scan registration and real-time complete dataset processing in Collage Site

This high-resolution laser scanner delivers unmatched accuracy, capturing detailed 3D data quickly in any environment. Its exceptional speed reduces on-site time, while an intuitive interface simplifies tasks and minimizes training. Seamless software integration such as Collage Site streamlines data processing, enhancing efficiency and empowering professionals to deliver precise results faster.

Enhanced Productivity

The combination of the CR-P1 and Collage Site's on-site data registration, streamlining your team's workflow by reducing post-processing and field data validation, gives you more time to focus on decisions that matter.



Simplified Workflows

The entire collection suite provides user-friendly operations to make site work seamless and efficient for professionals of all levels.

No Third-Party Contractors Required

Before leaving the job site, share your processed data with all stakeholders using the cloud. Take total control of your data collection and eliminate the cost and reliance on external teams.



Topcon Collage





Dynamic Digital Workflows

Collage and Collage Web

A powerful, yet simple way to process and combine mass data sets in one software environment, Collage makes it easy to manage your point cloud data. Collage Web is a web service for sharing and collaborating with 3D point clouds.

Processing point cloud data

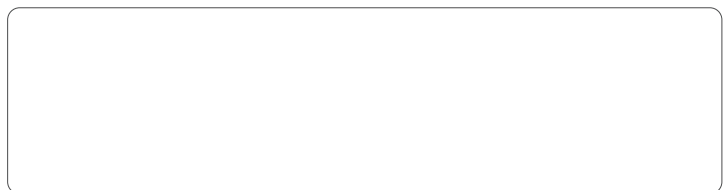
After field work is complete, Collage supports importing, viewing, and cleaning of collected point cloud data – providing multiple tools for registering, then geo-referencing scans to survey control.

Extracting objects

Tools for creating and editing objects such as polylines, meshes, edges, and planes are easily accessed. The region selection tool is especially useful for isolating surfaces such as roadways and building walls, floors, and ceilings.

Export to industry applications

Exporting clouds or objects to third-party design and analysis applications is simple. Topcon offers seamless workflows with third-party software.



Specifications subject to change without notice.

© 2025 Topcon Corporation. All rights reserved. 7010-2452 A 04/25

Learn more at topconpositioning.com

